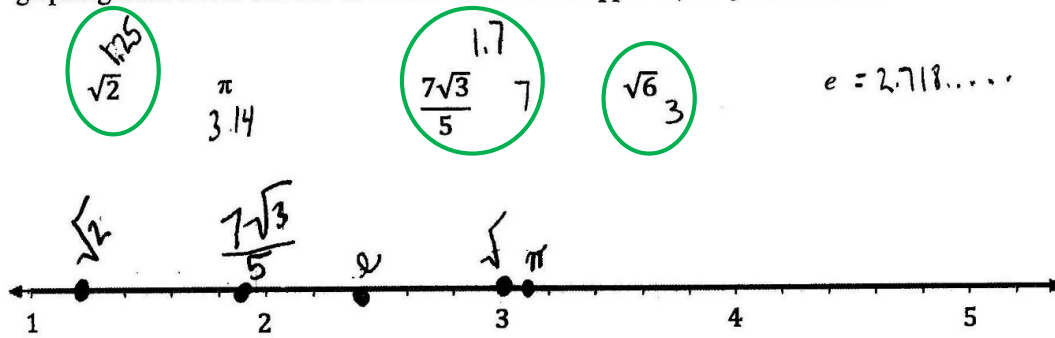


Use a calculator to estimate the value of each irrational number. Then, order the numbers by graphing each on the number line. The value of  $e$  is approximately 2.718281828459.



$$7\sqrt{3}$$

$$\sqrt{2} \sqrt{3}, \sqrt{4}$$

1                      2

7

$$\begin{array}{r} 4 \\ 1.7 \\ \times 1.74 \\ \hline 119 \\ 170 \\ \hline 2.89 \end{array}$$